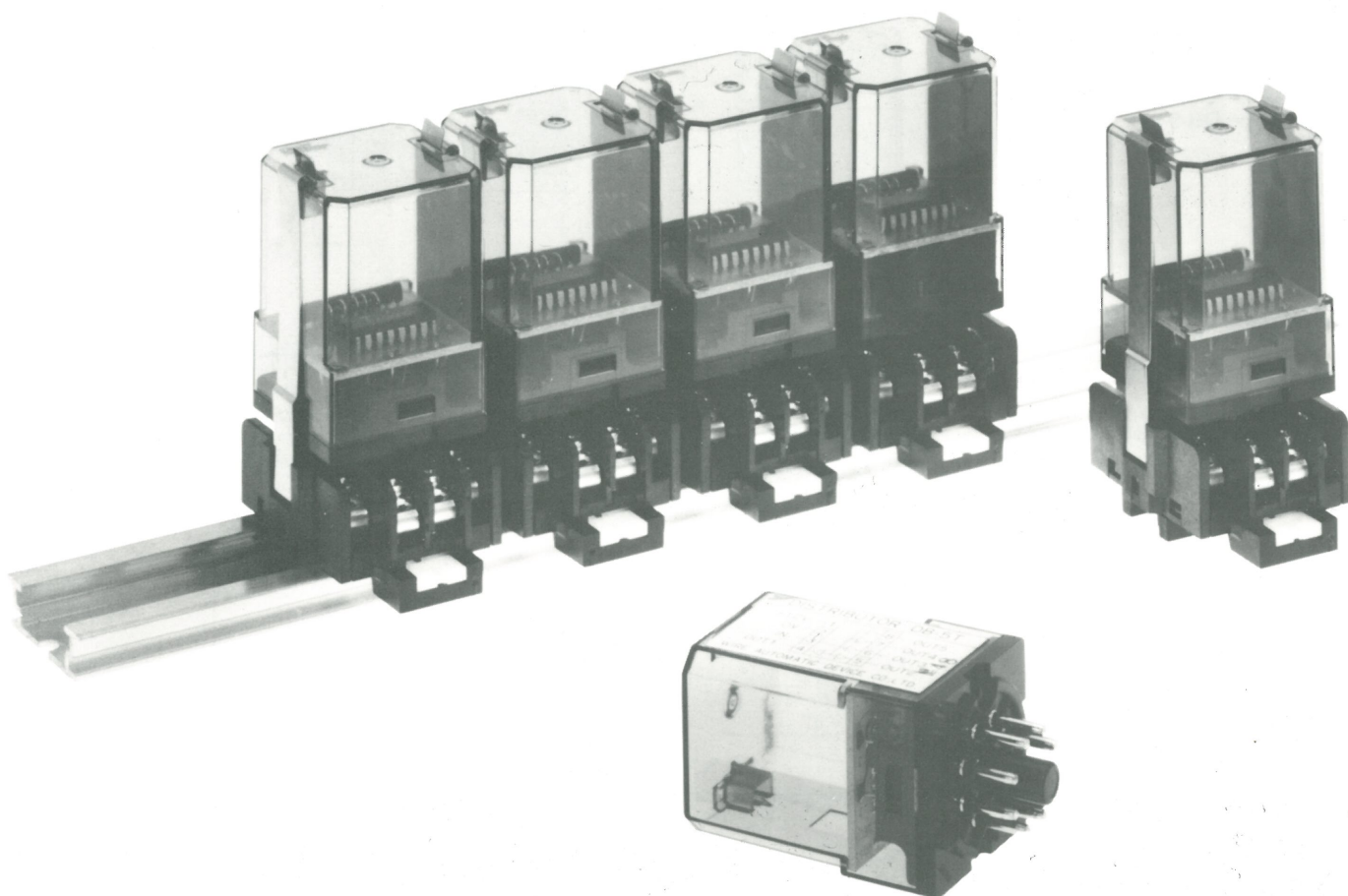


DISTRIBUTOR

MODEL **DB-5T**

WADECO

Many electronic counter units can be driven by only one sensor.



Introduction

The DB-5T Distributor receives an input signal from such sensors as a proximity switch, rotary encoder, etc. This input pulse can be distributed to 5 different circuits, thus with one sensor you can drive up to five electronic counter units. It is compact and rail mounted type.

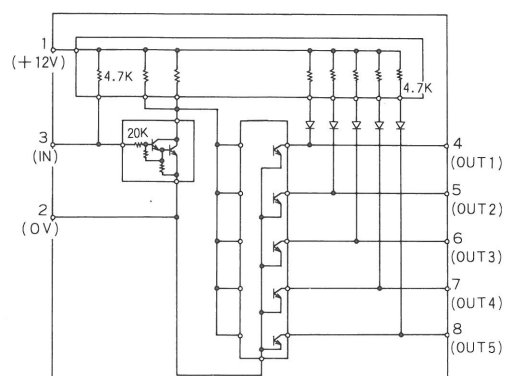


WIRE AUTOMATIC DEVICE CO., LTD.

Specifications

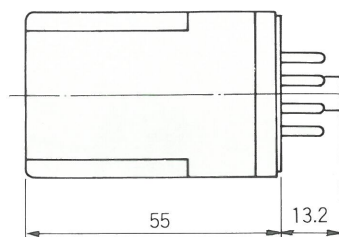
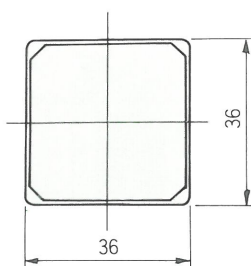
Type:	Distributor DB-5T
Power supply:	Socket TP-38X
Power consumption:	DC 12 ~ 15V
Input:	20 mA
Output:	Non-contact pulse input. Input by means of "H" (high) and "L" (low) input signal voltages.
Response frequency:	Non-contact pulse output. Output by means of "H" (high) and "L" (low) output signal voltages.
Ambient temperature:	20 KHz
Weight:	-10°C ~ +55°C
	Distributor 30g
	Socket 50g

Connection

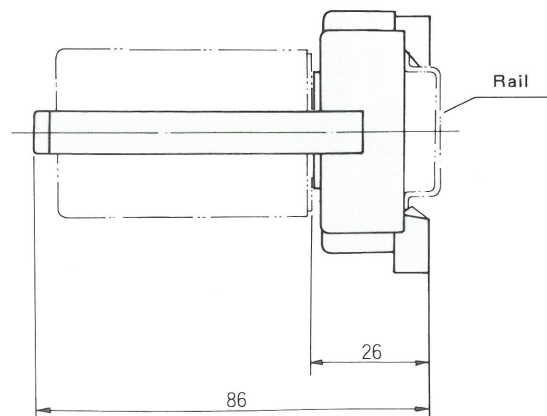
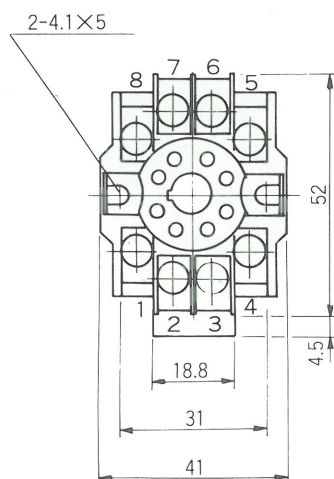


External Dimensions

**Distributor
Type DB-5T**



**Socket
with metal fastening clips
Type TP-38X**



This specification may be changed without notification.