

3/2-Way Midget Type, Direct Acting, Solenoid Valves.

Normally Inlet Closed, Energised to Open,
De-energised to Exhaust.

DATA SHEET
9358B

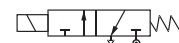
SPECIFICATIONS

Sizes	: 6mm (1/4").
End Connections	: Standard-G-ISO-228 (BSP-F) at inlet & BSP (M) at outlet. Optional-NPT at inlet.
Construction-Body	: Standard-Brass forged IS 6912.
-Seat	: Standard-Nitrile (Buna 'N'), Optional-Viton.
Differential Pressure	: 0 to 7 bar.
Temperature of fluid	: -5°C to 80°C.
Coil Voltage	: Standard-230-volts, 50Hz. A C. Optional - 24,110, 240 V DC & AC 50Hz or 60Hz.
Coil Insulation and Temperature	: Ambient upto 32°C (for M22 Coil). Class 'H' insulated upto 155°C.
Coil Rating	: Continuously rated.
Enclosure	: Standard-General purpose SQ. moulded coil upto IP-20, Optional-Weatherproof SQ. moulded coil upto IP-65,
Fluids	: Air, Gas,



Sales Point	: Manual override as a Standard feature. Simple, reliable economical valve for multi-million operations.
Application	: For operating Diaphragm valves. Single acting cylinders, for opening Diaphragm & Piston Types Globe, Angle seated 2 way & 3 way Valves.
Note	: 1) USE OF FILTER IN THE INLET SIDE IS HIGHLY RECOMMENDED. 2) NOT APPLICABLE FLAMEPROOF ENCLOSURE.

SPECIFICATION TABLE 3/2 WAY NORMALLY CLOSED

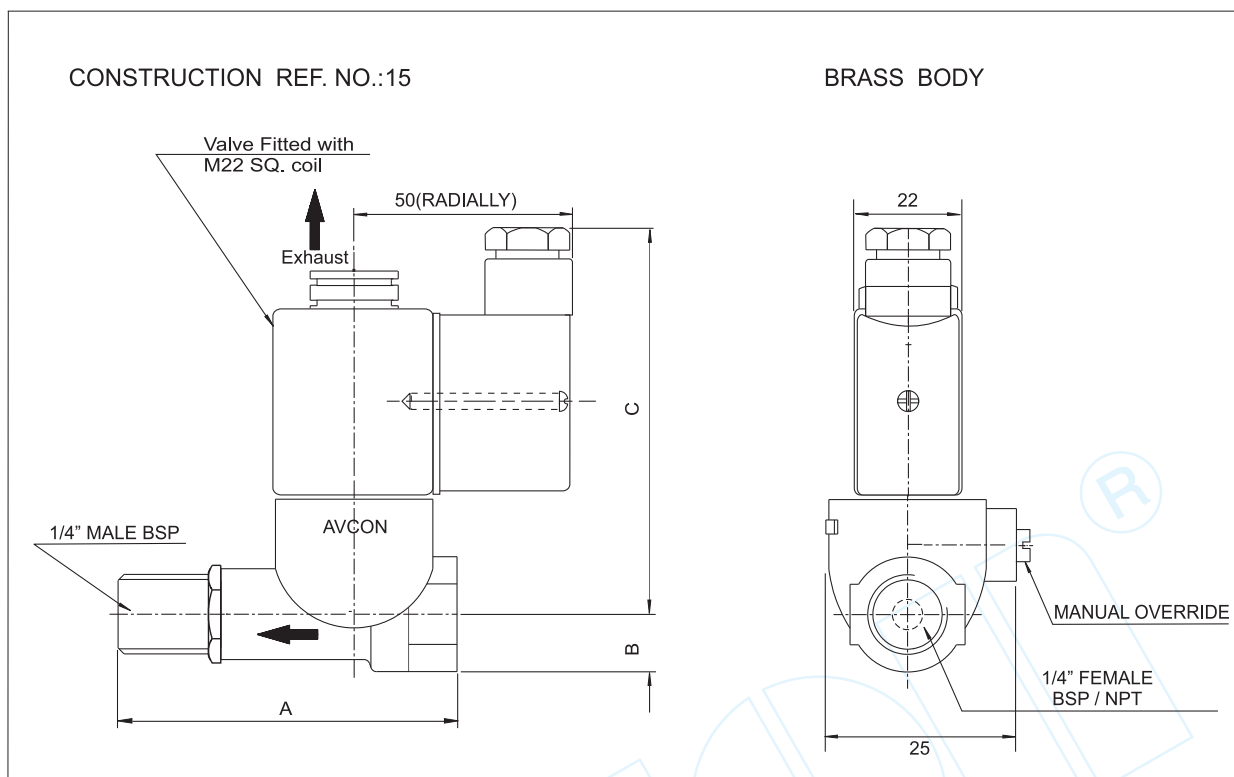


Catalogue Number	Pipe Size	Orifice Size	Flow Factor Kv	Minimum Pressure	Maximum Operating Pressure (bar)		BTP		Material		Constr. Ref.	VA Rating	Watt Rating	Coil	Housing
	Inch	mm	M ³ /hr.	bar	AC	DC	bar		Body	Seat		AC	DC	Type	
					Air/Gas	Air/Gas									
9358B020	1/4"	2.0	0.08	0	6.5	7	40		BR	BN	15	9.4	6.0	M22	SQ

ELECTRICAL REFERENCE

Coil Type	Power Consumption & Watt Rating			Class of Insulation	Protection
	AC		DC		
	VA Inrush	VA Holding	Watts		
M 22 SQ	12.7	9.4	6	H	GP/WP IP-65

DIMENSIONS IN (MM)



Catalogue Number	Pipe Size	Constr. Ref.	A	B	C	Weight (Approx.)
	Inch					Kgs. ♦
9358B020	1/4	15	52	9.5	68	0.185

♦ Wt with GP enclosure only, ask AVCON for other weights.

Note:

Technical specifications, details & dimensions are subject to change without prior notice. Dimensions in the table are approximate subject to final confirmation by AVCON.