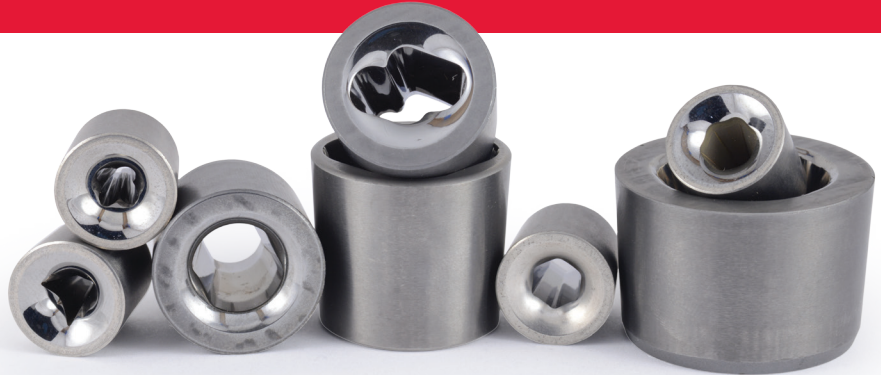




Shape Dies

Key Benefits

- State-of-the-art wire EDM and optical inspection systems enable extremely tight tolerance control.
- Die set engineering is available.
- Dies are custom engineered to provide maximum drawing performance.
- Unparalleled surface finish is achieved through advanced finishing technology translating to higher quality finished shape drawing dies.
- For use in pressure and non-pressure applications.



Paramount Die manufacturers shape wire dies in both cased and insert options for drawing and extrusion machines.

Shape dies are manufactured to the profile specifications suited for your drawing operation. Shapes include: square, rectangular, hexagonal, triangular, oval, and custom.

Shape Profile Specifications

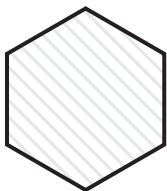
Size Range	≥ 0.5 mm (≥ .0196")
Available shapes	Virtually any profile is available
Min tolerances	.0002" / 0.005mm
Available angles	6° - 28°
Angle tolerance	± 2°

Shape dies transform wire

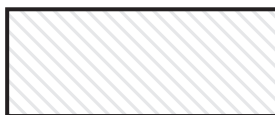


Shape Dies

Virtually any shape die is available. Please contact Paramount Die to receive a quote for your tooling needs.



HEXAGON



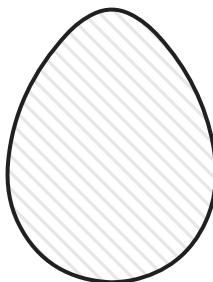
RECTANGLE



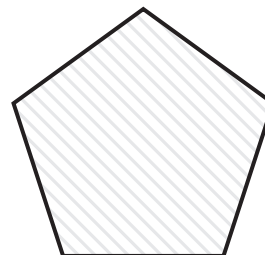
SQUARE



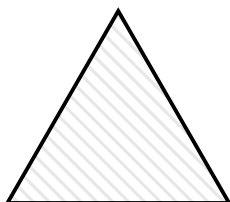
OVAL



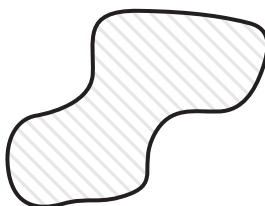
OVATE



PENTAGON



TRIANGULAR



CUSTOM

**Need something different
for your project?**

We can produce custom shape dies
to fit your specific needs. Contact us
today to get started.

