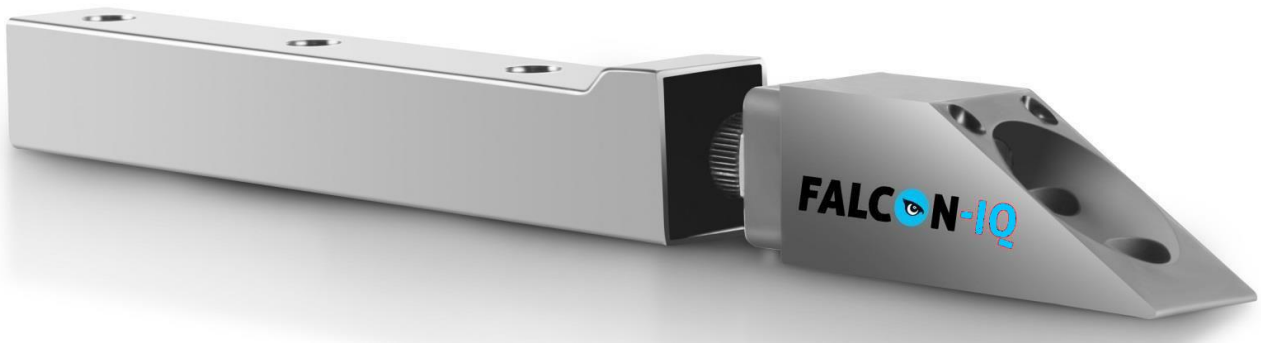




Model: EFCD-9058

HD Colour Compact Camera

---



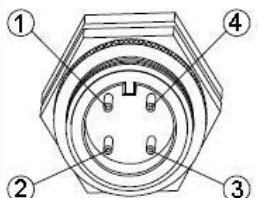
## Product Specification

# Specifications

Description	EFCD-9058
Lens specified	58°
Recording element	Sony CCD 1/3"
Picture elements	700 TV lines (HD)
T.V. system	PAL Standard, 1 Vtt composite video into 75Ω
Light sensitivity	<0.01 lux,
IP standard	IP69K based on DIN40040-9:1993 directive
Type Lens	Fixed focal, minimum object distance: 0.2m
Hi bright LED	Luminous 11000mcd
Housing	Stainless steel 304
Mechanical shock test	30G, 11ms, 5.1000Hz
Vibration test	Random vibration test 15G RMS
Power Input	Stabilized 12V/DC
Power Consumption	3.4 Watt
Operating Temperature	-30°C to +75°C
Weight	0.75kg

## Installation

Camera connector 4p male



4	Black (0 V)
3	Red (+12V/DC,)
2	Coax shield (Video GND)
1	Coax core (Video signal)

Make sure that the camera is mounted on the inner part of the left fork.

