

## DBTZ

### AIR DUCT THERMOSTATS



#### FUNCTION

Temperature monitoring in air or non aggressive gas ducts. Models with setpoint adjustment by knob on or under the cover and range calibration.

#### APPLICATIONS

Well-suited for general applications in strong polluted domestic and industrial areas.

TYPE	RANGE °C	STAGES	HYSTERESIS IN THE STAGE K	HYSTERESIS BETW. THE STAGES K	MAX. BULB TEMP. °C	SPRING LENGTH mm
DBTZ-1/2	-30...+30	2	1	2...5	60	200/Ø21
DBTZ-2U	-30...+30	1	1		60	200/Ø21
DBTZ-7	0...+60	1	2...20		75	200/Ø21
DBTZ-7/2	0...+60	2	1	2...5	75	200/Ø21
DBTZ-8	0...+60	1	1		75	200/Ø21
DBTZ-9FT	0...+60	1	man. min. reset		75	200/Ø21
DBTZ-9ST	0...+60	1	ST		75	200/Ø21
DBTZ-12U	+50...+120	1	ST		140	200/Ø21

**U** knob under the cover  
**ST** manual maximum reset

#### Accessories:

The thermostats are factory supplied with protection spring and mounting bracket model DBZ-25.

#### TECHNICAL FEATURES

**Sensitive element:** liquid-filled coiled copper bulb with 200 mm protection spring and mounting bracket

**Contacts:** dust-tight microswitches with SPDT contacts (heat/cool)

**Switch capacity:** 15 (8) A, 24...250 Vac

**Differentials:** see schedule

**Working:** -35...+65 °C  
 10...90% r.h. (without condensing)

**Storage:** -40...+70 °C  
 < 95% r.h.

**Housing:** Bayblend base, ABS cover

**Protection:** IP65, class I

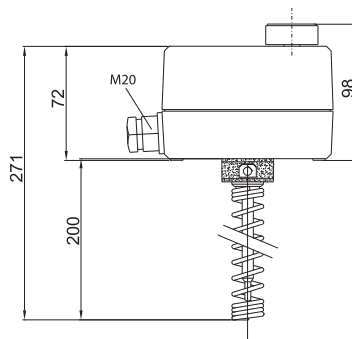
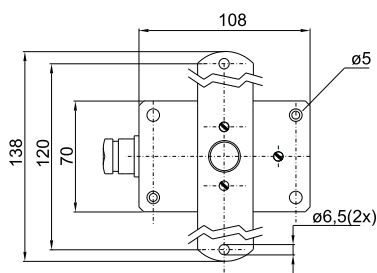
**Size:** 108 x 70 x 72 mm

**Weight:** 690 g

#### Note

The range may be calibrated by tuning carefully the hexagon nut under the knob (fig. 1).

#### DIMENSIONS (mm)



#### WIRING DIAGRAM

##### Heating

Connect to red terminal and to blue terminal (fig. 2). The contact opens during the temperature rising. 2-stage versions: during the temperature rising, the contact of stage 2 opens first, then the contact of stage 1.

##### Cooling

Connect to red terminal and to white terminal (fig. 2). The contact opens during the temperature dropping. 2-stage versions: during the temperature dropping, the contact of stage 1 opens first, then the contact of stage 2. The respective free contacts close simultaneously (signal contact).

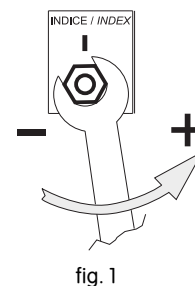


fig. 1

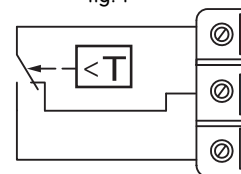


fig. 2

