

---

# Operating Instructions

## for the S - SW 3 Capacitive Threshold Switch

Unicontrol Electronic GmbH, 23 May 2000

---

### 1. Function

The capacitive threshold switch S-SW 3 is typically used for roller conveyor control applications in rolling mills, in sandblasting plants, or the like. This switch detects and evaluates the presence of metal parts and other conductive objects within its sensing range. Contamination of the electrodes which may be caused by slag, metal dust or a thin layer of abrasives will not affect the proper function of the capacitive threshold switch.

The device consists of two parts:

- Sensor unit, housed in a plastic casing and a
- Sensor electrode

The sensor electrode is not included in the unit of supplied. It is dimensioned by the user, based on the specific requirements of the application at hand. The shape of the electrode determines the sensing range.

### 2. Sensor Unit

The sensor unit part is housed in a IP65 / DIN 40050 Makrolon casing. Two cable inlets are available for making the electrical connections.

- PG 9 : 24V DC or AC voltage supply and relay output
- PG 7 : connection to sensor plate (coaxial cable)

The voltage supply and the relay output are applied to the two 3-pole plug-type terminals, X1 and X2:

- X1/ 1 and 2 : 24V (+/-10%)
- X1/ 3 : reference potential ( machine casing or PE conductor)
- X2 : floating NO contact (changeover contact, max. 230 V / 4 A)

If an inductive consumer is to be connected to X2, proper interference suppression is required!

Connect the cable for the sensor plate to the 2-pole sensor terminal.  
Use an RG58 ( 50 ohms ) coaxial cable or similar (mandatory).

Connect the cable core to the left terminal (X3/1), and the cable screen to the right terminal (X3/2), as shown in the drawing.

### 3. Sensor Plate

The sensor plate must include:

Sensing electrode A  
Counter-electrode B  
Mounting carrier C  
Spacer D

The electrodes are made of conductive metal ( steel, aluminum, etc. ). The thickness ("d") of the material is non-critical and is adjusted to match the dimensions required.

Possible dimensions are:

Sensing electrode and counter-electrode ( same dimensions ):

Width "a": min. 30 mm, max. 200 mm  
Length "b": min. 30 mm, max. 4000 mm

The type of mounting carrier depends on the type of mounting or application.

Spacer " D " is a plastic bolt as indicated in the drawing (min. 20 mm, max. 50 mm).

The sensor plate is mounted in such a way that the sensing electrode is as close to the objects to be detected as possible. This ensures safe and reliable switching performance.

### 4. Startup

Mount the sensor plate as described under Item 3.

Mount the electronics equipment so that the sensor cable (coaxial cable) is not longer than 70 cm (standard cable, 50 cm in length; included in the scope of supplies).

Before connecting the coaxial cable, check the electrodes to make sure that there is :

- 1) No short-circuit present between the electrodes, and
- 2) No electrical connection to the machine frame.

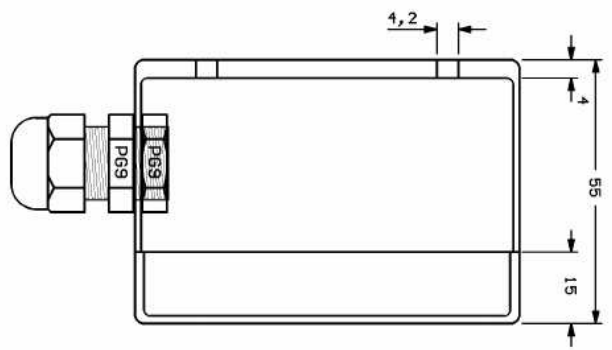
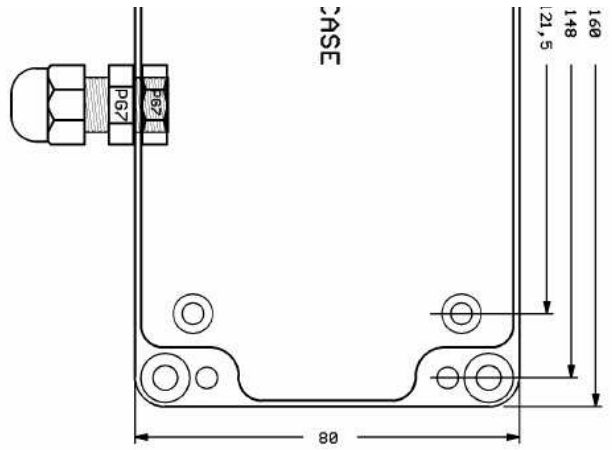
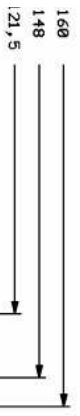
Connect the screen of the coaxial cable to counter-electrode " B " and the cable core to sensing electrode " A ".

At first, apply the supply voltage to X1. The green LED must go ON. After a brief transient time of about one minute, carry out the calibrated as follows:

1st case:

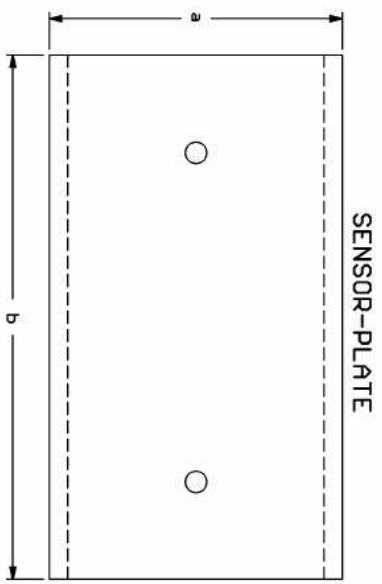
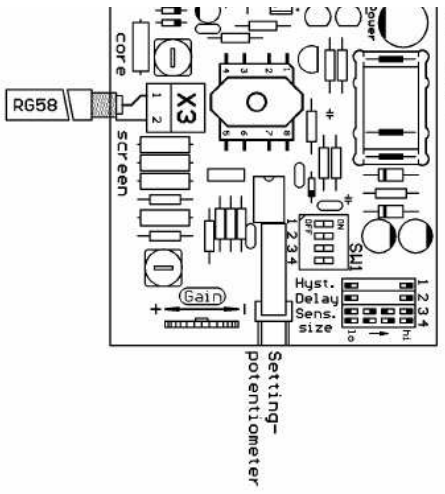
The red LED is ON! Turn the setting potentiometer "GAIN" in the MINUS direction (see symbol on the printed-circuit board) until the red LED goes OFF and the relay drops out. Now slowly turn the potentiometer back a little. This is the point where



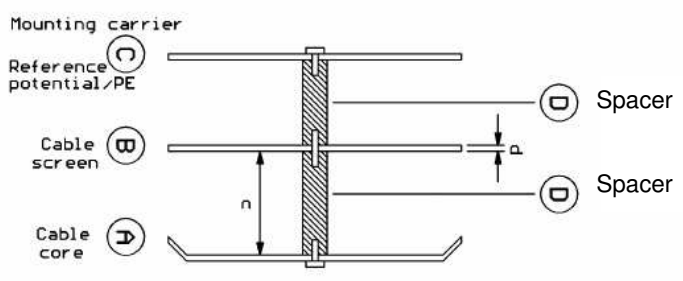


CASE

OR UNIT



SENSOR-PLATE



Threshold Switch/S-SM.

Sheet

Number

REV	DATE	
	21.08.2000 15:06:32	