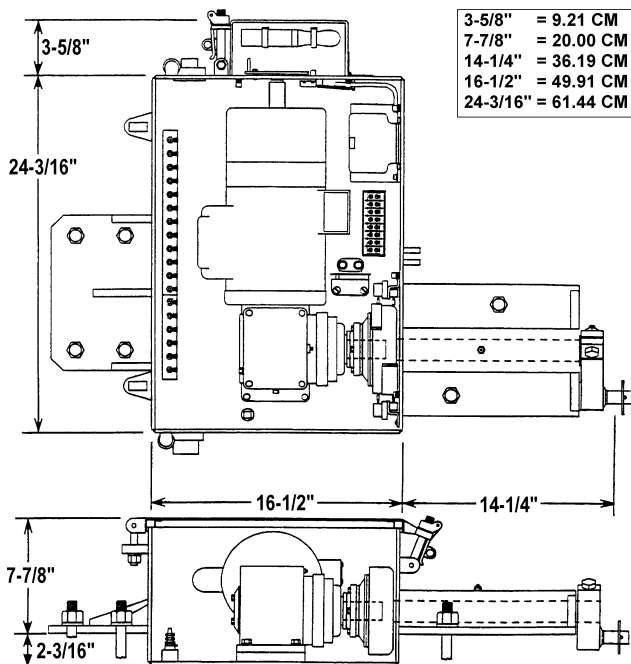


# YM-2000™ Yard Electric Switch Machine

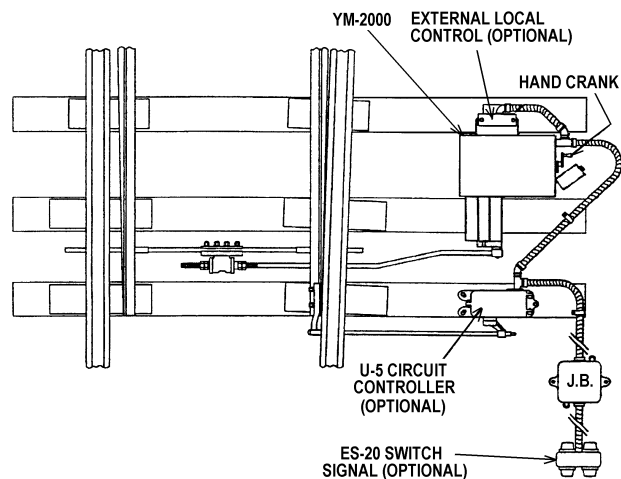
## Specifications

Stroke Completion: 2 sec. @ nom. voltage, 70°F (21 °C)  
 Throw Distance: 6 in. (15.24 cm) max.  
 Rated Output: 1000 lbs. (454 kg)  
 Manual Full Throw: 64 turns (crank handle)  
 Trailing Speed: 20 mph (32 kph), max.  
 Motor Power Input: 110 Vac ( $\pm 20\%$ ), 60 Hz  
 Inrush Current: 42A for throw @ 115 Vac, 60 Hz  
 Motor Current: Max: 15A  $\pm 10\%$   
 Normal: 7-8A @ 115Vac, 60 Hz  
 5-7A @ 230 Vac  
 Contactors: 24 Vdc, 120 Vdc, 120 Vac, 240 Vac  
 Operating Temp.: -40°C to + 70°C  
 Weight: 250 lbs (113.4 kg).

## Machine Dimensions\*



## Typical Layout\*



\* Right-hand machine layout shown. Same relative placement of equipment for left-hand machine. Refer to service manual SM-6455 for additional diagrams.

\* Right-hand machine dimensions shown. Same relative dimensions for left-hand machine. Refer to service manual SM-6455 for additional diagrams.

YM-2000 Machines			
Order No.	Layout	Motor	Contactor
N451063-0301	Right-Hand	115 Vac	115 Vac