

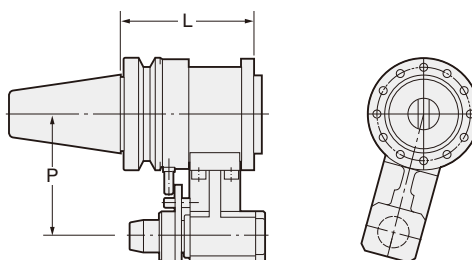
MODULAR TYPE ANGULAR HEAD

NIKKEN

Modular type Angular Head AHM



AHM



MAX6,000min⁻¹

TAPER	Code No. -L	L	P	Weight (kg)	Suitable Modular Head
No.40	BT40-AHM-100	100	65	4.5	
No.50	BT50-AHM-120	120	110	11.5	

★Taper Connection System is applied to Stopper Block. (Different from the another FA Tooling)

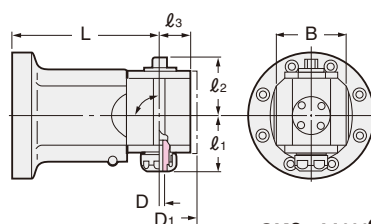
★All types are available with Oil Hole System.

★Stopper block is available as an option. When ordering, please inform your M/C maker and Model as well as your M/C spindle flange dimension.

90°type Modular Head AHM90



AHM



Explanation of the Code No.

AHM90 - SK6 - 80

● Length from Gauge Line

● Symbol of Slim Chuck

● Symbol of Modular Head 90°type

SK6 : MAX6,000min⁻¹ SK10,16 : MAX4,000min⁻¹

Code No. -L	D	l ₁	l ₂	l ₃	D ₁	B	Weight (kg)	SK Collet
AHM90-SK 6-80, 120, 150*	0.7~6	42	35	22	50	48	3.0, 4.0, 4.5	SK 6
-SK10-80, 120, 150*	1.75~10	63	57	32	64	60	3.5, 4.5, 5.0	SK 10
-SK16-80, 120, 150*	2.75~16	66	58	35	74	70	4.2, 5.2, 5.7	SK 16

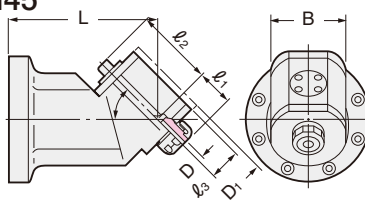
★*Mark is for light machining. ★For SK Collet, please refer P.43. ★When M/C spindle rotates CCW, the cutter rotates CW.

★Test bar is attached as standard.

30°, 45°, 60°type Modular Head AHM45



AHM



Explanation of the Code No.

AHM45 - SK6 - 120

● Length from Gauge Line

● Symbol of Slim Chuck

● Symbol of Modular Head 45°type

SK6 : MAX6,000min⁻¹ SK10,16 : MAX4,000min⁻¹

Code No. -L	D	l ₁	l ₂	l ₃	D ₁	B	Weight (kg)	SK Collet
AHM45-SK 6-120, 150*	0.7~6	27	67	22	50	52	3.0, 4.0, 4.5	SK 6
-SK10-120, 150*	1.75~10	39	80	30	64	60	3.5, 4.5, 5.0	SK 10
-SK16-120, 150*	2.75~16	38	90	35	74	70	4.2, 5.2, 5.7	SK 16

★*Mark is for light machining.

★For SK Collet, please refer P.43.

★Angle 30°, 60° are also available as an option.

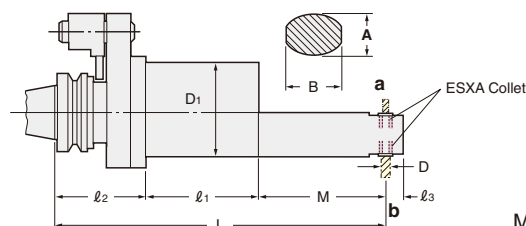
★When M/C spindle rotates CCW, the cutter rotates CW.

★Test bar is attached as standard.

Angular head for deep hole AHPL



AHPL



MAX3,500min⁻¹

TAPER	Code No. -L	D	D ₁	A	B	L	M	l ₁	l ₂	l ₃	min ⁻¹	Weight (kg)	Applicable Collet
No.40	BT40-AHPL4-199	1.0~4.0	80	25	31	199	32	67.5	99.5	14.5	6,450	5.0	ESXA4
	-223					223	56					5.5	
	-247					247	80					6.0	
	-271					271	104					7.5	
	-AHPL6-208					207.5	46.5					5.0	
No.50	-236	1.0~6.0	80	36	45	235.5	74.5	61.5	99.5	15	8,000	6.0	ESXA6
	-264					263.5	102.5					8.0	
	BT50-AHPL6-221					220.5	46.5					7.0	
	-249					248.5	74.5					8.0	
	-277					276.5	102.5					10.0	
	-AHPL8-248	1.0~8.0	110	43	47.5	247.5	73	78	96.5	20	6,000	9.0	ESXA8
	-280					279.5	105					10.0	
	-300					299.5	125					11.0	

★ESXA Collet is supplied as an option.

★Different shape is possible, please contact with us for more detail.

★When M/C spindle rotates cw, the cutter at a rotates CW and the cutter at b rotates CCW.

★IT40-AHPL6-270 and IT50-AHPL8-288 are also available.